

Product Specification Sheet

Doc Nbr: PSS-052402 R1

Sept 2024 – Page 1

Model SG320

Gamma Irradiated Single-Use pH Sensor with Insertion Assembly and AseptiQuik® Connector

Description

The Model SG320 is a gamma irradiated single-use pH sensor and bellows insertion assembly equipped with a AseptiQuik® connector for aseptic attachment to a bioprocess container (BPC). The entire SG320 assembly is assembled and double bagged in an ISO 7 cleanroom and then gamma irradiated. This enables users to quickly connect the pH sensor assembly to the BPC and aseptically insert the sensor into the media. This saves operator time and reduces risk.

The pH sensor is a Broadley-James SU200 SingleSense® pH sensor that can be specified with optional RTD and any of three different types of sensor connector. The bellows insertion assembly is a LePure assembly (LePure Part Nbr MT0-BRO-4) with a AseptiQuik® connector (CPC Part Nbr AQG17008HT).

Model Number	SG320
Part Number	See part number tables on the right for options and their full part numbers

Sensor Specifications

Measurement Range	2–11 pH
Operational Temp. Range	1°–40°C [34°–104°F]
Storage Temperature	5°–50°C [41°–122°F]
Shelf Life	12 months
Gamma Irradiated	25-40 kGy
BPC Interface	AseptiQuik® connector (CPC Part Nbr AQG17008HT)
Sensor Connectors	Available with VarioPin V6, Schott S8, or Mettler Toledo K9
Sensor RTD	Available with Pt100 or Pt1000

Wetted Materials

pH Glass Electrode	Lead-free Glass
Ceramic Junction	Alumina Silicate
Insertion Assembly	Dimethyl Silicone Rubber Pt Cure, USP Class VI, ADI Free (LePure Part Nbr MT0-BRO-4)
O-ring seal, sensor to assembly	Dimethyl Silicone Rubber Pt Cure, USP Class VI, ADI Free
AseptiQuik® connector	Polycarbonate, Dimethyl Silicone Rubber Pt Cure, USP Class VI, ADI Free (CPC Part Nbr AQG17008HT)

CALIBRATED, IRRADIATED, READY-TO-USE



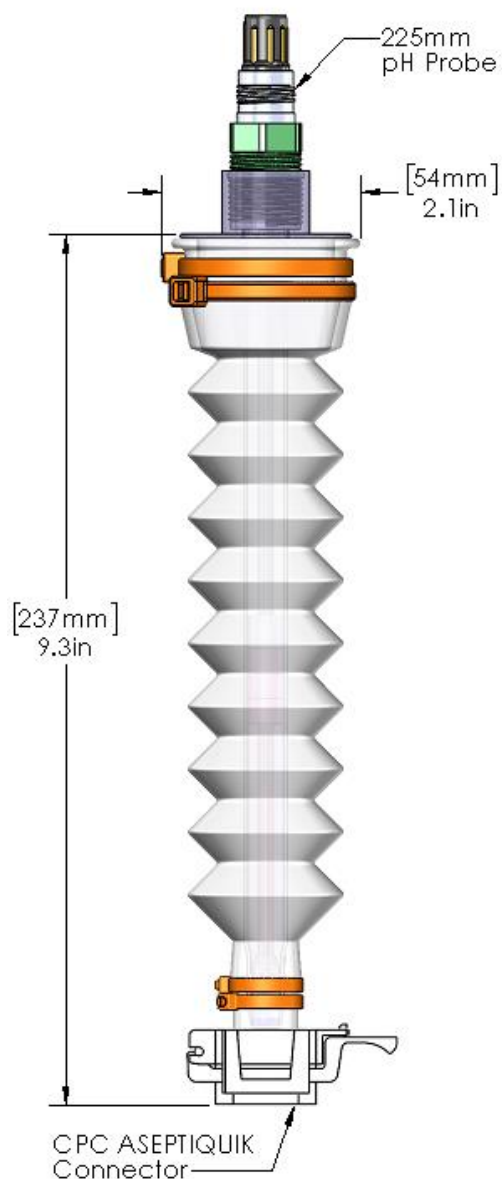
Model SG320 Single-Use pH Sensor Assembly
with AseptiQuik® connector.

Part Number Tables

Model SG320 with AseptiQuik® Connector, no RTD		
Part Number	RTD	Sensor Connector
SG320-NA-V6	None	V6
SG320-NA-S8	None	S8
SG320-NA-K9	None	K9

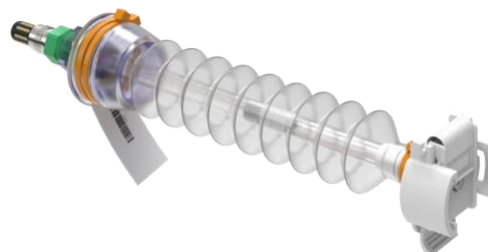
Model SG320 with AseptiQuik® Connector, with RTD		
Part Number	RTD	Sensor Connector
SG320-1K-V6	Pt1000	V6
SG320-01-V6	Pt100	V6

Dimensional Drawing of SG320

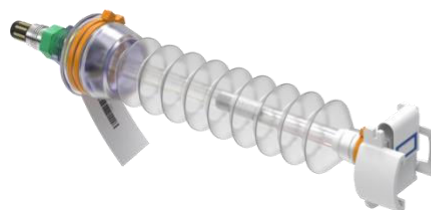


Saves Time, Reduces Risk

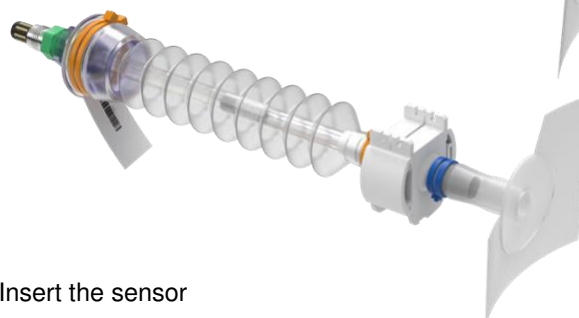
Gamma irradiated and ready to use right out of the box



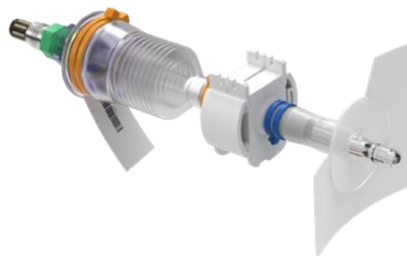
1 Prep Connectors



2 Connect



3 Insert the sensor



The contents of this publication are presented for information purposes only, and while every effort has been made to ensure their accuracy, they are not to be construed as warranties or guarantees, express or implied, regarding products or services described herein or in their use or applicability. All sales are governed by our terms and conditions, which are available on request. We reserve the right to modify or improve the design or specification of such products at any time.

Doc Nbr: PSS-052402 R1

Published 18 Sept 2024

© Sept 2024 Broadley-James Corporation. All rights reserved. Visit www.broadleyjames.com/IP for trademark and patent information.

TMP-PSS-102101 R1