

## Description

The SU680-08 SingleSense™ Single-Use pH Sensor is a flow-through sensor with 1/2-inch hose barbs. Designed for downstream bioprocess applications.

## Purchase Information

Part Number	SU680-08
Description	Single-Use Flow-Through pH Sensor, 1/2 inch

## Classification

Model Type	SU680
Product Type	pH Sensor

## Specifications

### Measurement

Type	pH
Principle	Potentiometric
Range	2–12 pH
Drift	≤ 0.01 pH per day

### Operational Range

Temperature	15°–50° C [60°–122° F]
Pressure	0–3040 mmHg [0–45 psig]
Maximum Flow Rate	13.9 liters/minute [3.68 gallons/minute]

### Signal

Input	Not applicable
Output	Sensor: Millivolts: $\pm 414$ Metadata: Digital: SensorTalk®

### Sterilization

Autoclavable	Not autoclavable
Steam Sterilizable	Not steam sterilizable
Gamma Sterilizable	Yes, up to 50 kGy

### Connectors and Cables

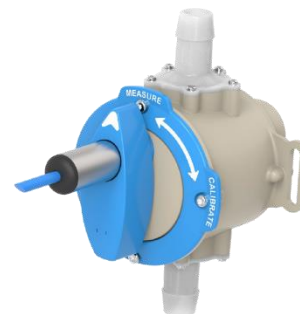
Connector	8-pin Variopin
Cable Length	0.15 m [6 inches]

### Process Interface

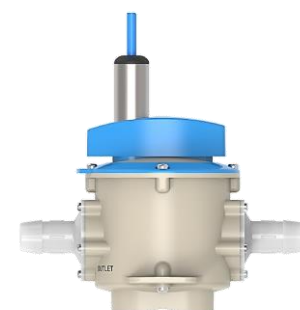
Insertion Method	1/2-inch Hose Barbs
Insertion Length	Not applicable

## Wetted Materials

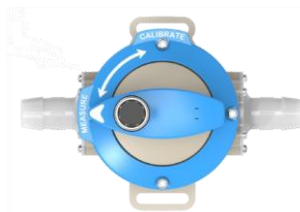
PEEK, USP Class VI, ADI-Free, Extraction Tested 21CFR, 177.2600  
Dimethyl Silicone Rubber, Pt Cure, USP Class VI, Extraction Tested 21CFR, 177.2600  
EPDM USP Class VI, FDA Compliant, ADI-Free  
HDPE, USP Class VI  
Lead-Free Glass, Alumina Silicate



Sensor in Measure Mode



Side View of Sensor



Top View with Dial Face

## Packaging and Regulations

### Packaging Information

Package Type .....	Cardboard box with double-bagged sensor inside
Package Dimensions .....	30.48 x 30.48 x 5.08 cm [12 in x 12 in x 2 in]
Package Weight .....	< 0.5 kg [1 lb]
Double Bagged .....	Yes, sensor is double-bagged
Cleanroom Bagged .....	Yes, inner bag only
Cleanroom Class .....	Class 7 Clean Air Hood
Storage Conditions .....	Temperature: 5°–35° C [41°–95° F]
Included Accessories .....	Not applicable
Quality Certificate .....	Included
Shelf Life .....	36 months
Shelf Life Post Gamma Sterilization .....	30 months

### Origination and Tariff Code

Harmonized Tariff Trade Code .....	9027803100
Country of Origin .....	USA
MFR Location .....	California, USA

### Purchasing Information

Unit of Sale .....	Each
Minimum Purchase Quantity .....	Each

### Regulatory and Compliance

CE Compliant .....	Yes
RoHS Compliant .....	Yes
REACH Compliant .....	Yes
CFR 21-11 Compliant .....	Not applicable
BSE/TSE/ADI Compliant .....	Yes
USP Class VI Compliant .....	Yes, all wetted parts
FDA Material Compliant .....	Yes, all wetted parts

The contents of this publication are presented for information purposes only, and while every effort has been made to ensure their accuracy, they are not to be construed as warranties or guarantees, express or implied, regarding products or services described herein or in their use or applicability. All sales are governed by our terms and conditions, which are available on request. We reserve the right to modify or improve the design or specification of such products at any time.

Doc Nbr: PDS-112058 R3 Published 28 Feb 2022  
© February 2022 Broadley-James Corporation. All rights reserved. Visit [www.broadley-james.com/trademarks](http://www.broadley-james.com/trademarks) for trademark information.

TMP-PDS-112001 R1



#### North America and Pacific

Email: [sales@broadleyjames.com](mailto:sales@broadleyjames.com)  
Web: [www.broadleyjames.com](http://www.broadleyjames.com)

Phone: 949-829-5555  
Toll-free: 800-288-2833  
Fax: 949-829-5560

19 Thomas, Irvine, CA, 92618 USA

#### United Kingdom and EU Countries

Email: [sales@broadleyjames.co.uk](mailto:sales@broadleyjames.co.uk)  
Web: [www.broadleyjames.eu](http://www.broadleyjames.eu)

Phone: +44 (0)1525 862518  
Fax: +44 (0)1525 862811

Wrest Park, Silsoe, Bedford MK45 4HS, UK