

Description

The SU600-04 Single-Use pH Sensor is a flow-through sensor with 1/4-inch hose barbs. Designed for downstream bioprocess applications.

Purchase Information

Part Number	SU600-04
Description	Single-Use Flow-Through pH Sensor, 1/4 inch

Classification

Model Type	SU600
Product Type	pH Sensor

Specifications

Measurement

Type	pH
Principle	Potentiometric
Range	2–12 pH
Drift	≤ 0.01 pH per day

Operational Range

Temperature	15°–50° C [60°–122° F]
Pressure	0–3040 mmHg [0–45 psig]
Maximum Flow Rate	3.5 liters/minute [0.92 gallons/minute]

Signal

Input	Not applicable
Output	Sensor: Millivolts: ±414 Metadata: Digital: SensorTalk™

Sterilization

Autoclavable	No
Steam Sterilizable	No
Gamma Sterilizable	Yes, up to 50 kGy

Connectors and Cables

Connector	8-pin Variopin
Cable Length	0.15 m [6 inches]

Process Interface

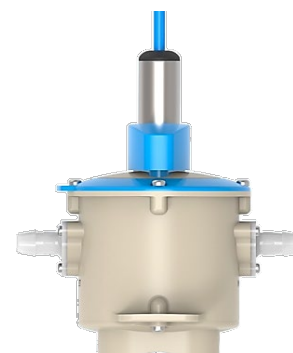
Insertion Method	1/4-inch Hose Barbs
Insertion Length	Not applicable

Wetted Materials

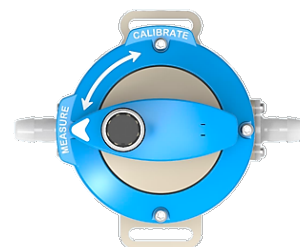
PEEK, USP Class VI, ADI-Free
Extraction Tested 21CFR, 177.2600, Dimethyl Silicone Rubber, Pt Cure, USP Class VI
Extraction Tested 21CFR, 177.2600, EPDM USP Class VI, FDA Compliant, ADI-Free
Lead-Free Glass, Alumina Silicate



Isometric View



Side View



Top View with Dial Face

Packaging and Regulations

Packaging Information

Package Type	Cardboard box with double-bagged sensor inside
Package Dimensions	30.48 x 30.48 x 5.08 cm [12 in x 12 in x 2 in]
Package Weight	< 0.5 kg [1 lb]
Double Bagged	Yes, sensor is double-bagged
Cleanroom Bagged	Yes, inner bag only
Cleanroom Class	Class 7 Clean Air Hood
Storage Conditions	Temperature: 5°–35° C [41°–95° F]
Included Accessories	Not applicable
Quality Certificate	Included
Shelf Life	36 months
Shelf Life Post Gamma Sterilization	30 months

Origination and Tariff Code

Harmonized Tariff Trade Code.....	9027803100
Country of Origin	USA
MFR Location	California, USA

Purchasing Information

Unit of Sale.....	Each
Minimum Purchase Quantity	Each

Regulatory and Compliance

CE Compliant	Yes
RoHS Compliant	Yes
REACH Compliant	Yes
CFR 21-11 Compliant	Not applicable
BSE/TSE/ADI Compliant.....	Yes
USP Class VI Compliant	Yes, all wetted parts
FDA Material Compliant.....	Yes, all wetted parts



Email: sales@broadleyjames.com
Web: www.broadleyjames.com
19 Thomas, Irvine, CA, 92618 USA

Phone: 949-829-5555
Toll-free: 800-288-2833
Fax: 949-829-5560